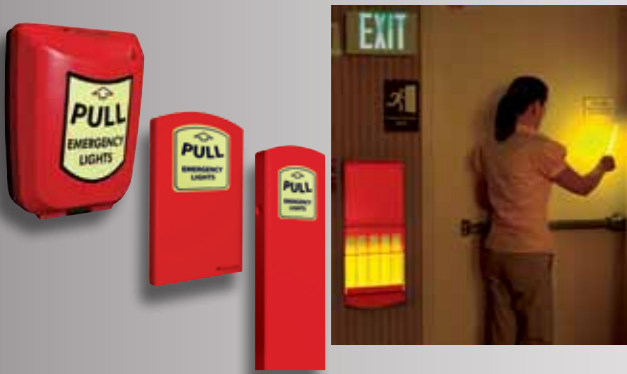


LightStation®

With an easy to locate glowing photoluminescent label on the front cover, LightStation® provides assurance that a safe light will be available when the power goes out.



LightStation® Models 4 and 10

Designed with a fire resistant case. When the front cover is pulled open, all SnapLight® lightsticks (25 cm) activate to provide instant illumination, flooding an area with portable light for evacuees. Available in Red and with MOQ of 250 pcs for other colors. Possible safety lock option (Model L).

LightStation® Model 20

Designed with a heavy-duty molded plastic case. When the front cover is pulled open, one SnapLight® (25 cm) activates, leaving 19 SnapLight® lightsticks for individuals to carry and use as light sources while evacuating. Available in Red.

LightStation***	PART#	CASE	10" REFILL	PART#	CASE
Model 4	9-00346	6	Yellow 4 HR	9-00352PF	200
Model 4 L*	9-00362	6	Yellow 4 HR	9-00351PF	40
Model 10	9-00343	4	Red* 4 HR	9-00367PF	200
Model 10 L*	9-00353	4	Red* 4 HR	9-00370PF	40
Model 20	9-00364	4	Tamper Pin	9-00354	25

* Available with MOQ. **SnapLight® lightsticks not included in LightStation®.

Photolum Plate

Equipped with an adhesive backing and pre-drilled holes, the Photolum Plate is easy to install and operate. Provide cost effective emergency lighting wherever it is needed.

PHOTOLUM PLATE	PART#	CASE
With 2x6" SnapLight® Yellow 30 MIN	LTD9-CABINPACKA	20
With 2x6" SnapLight® Green 12 HR	LTD9-CABINPACKB	20

S.E.E.® System

Install the S.E.E.® System with glowing photoluminescent label along a designated evacuation route to provide a safe, clearly lit path throughout a building. When the front cover is pulled open, two 6" SnapLight® lightsticks activate, providing instant light to prevent slips, trips and falls. Includes 2-hour Yellow high-intensity SnapLight® (15cm) lightsticks.

S.E.E.® System	PART#	CASE
S.E.E.® w/(20) SnapLight****	9-08500PF	10
Refill 6" Yellow 2 HR****	SA8-08505PF	100
Tamper Proof Pins	4-2101	100

***Includes Mounting Hardware & 2 Pins/PK. Sold as 10 Pack System. Not Packaged for Individual Sale.
****Includes (50) Expiration Date Labels & (50) Tamper Pins.

CYFLECT® Reflects White, Glows Bright

Cyflex® is a range of retro-reflective and photoluminescent material for safe evacuation and personal protection.



CYFLECT®

Reflective and self-luminous tapes, ideal for use on signs, displays, buildings, steps, stairs, and doorways. Available as sew on or adhesive in a variety of sizes. Custom colors, patterns, designs and insignia are available upon request.

CYFLECT® PT Belt™

Cyflex® personal marker Belts are adjustable, retro-reflective but also photoluminescent. Glow can be recharged by a headlight or any other light source.

PT Belt™	PART#	CASE
2" x 5,5' White PT Belt™ with Loop	9-3012509	Each

PT Belt™ also available in Green, Yellow, Orange, Red and Blue.



EMERGENCY PREPAREDNESS

CONTINGENCY LIGHTING

EVACUATION ILLUMINATION

RESCUE SIGNALING

MAINTENANCE OPERATION



Marking



Signaling



Illuminating



6" SnapLight® LightSticks (15 cm)

With a simple bend, snap, and shake, SnapLight® (15cm) industrial grade, phthalate-free chemical lightsticks provide instant light for all emergency situations. Each SnapLight® creates 360° of illumination, and is visible up to 1 mile. They are non-toxic, non-flammable, waterproof, and generate no heat or sparks.

Contact us for a customized foil to light up your brand.



Don't Be Caught in the Dark®



Cyalume Technologies SAS
295 rue Mayor de Montricher • ZI Les Milles • CS 40435
13591 Aix en Provence Cedex 3 • France

P: +33 (0) 442 371 780 • F: +33 (0) 442 371 799
info-europe@cyalume.com
www.cyalume.eu

Quality Made in France & U.S.A.

© Pictures Cyalume Sylvaincambon - 01-2016

12 HOURS	PART#	CASE
GREEN	SA8-08076BI	500
	SA8-108076BI	100
YELLOW	SA8-08082BI	500
	SA8-108082BI	100
ORANGE	SA8-08084BI	500
	SA8-108084BI	100
RED	SA8-08078BI	500
	SA8-108078BI	100
8 HOURS	PART#	CASE
BLUE	SA8-08080BI	500
	SA8-108080BI	100
WHITE	SA8-08098BI	500
	SA8-108098BI	100

30 MINUTES	PART#	CASE
YELLOW-HI	SA8-08086BI	500
	SA8-108086BI	100
RED-HI	SA8-08088BI	500
	SA8-108088BI	100
WHITE-HI	SA8-08094BI	500
	SA8-108094BI	100
5 MINUTES ULTRA	PART#	CASE
ORANGE-HI	SA8-27022BI	500
	SA8-127022BI	100

CDU Empty*	PART#	CASE
Standard	SA2-00048	Unit with MoQ
Customized	SA2-00050	Unit with MoQ

*MOQ of 250 pcs.

Counter Display Unit (CDU) for 24 Sticks





4" ChemLight® LightSticks (10cm)

Lightweight and handy, 4" ChemLight® lightsticks are recommended for marking routes, clearing areas, vehicle lane night patrol and survival kits.

4" ChemLight®	PART#	CASE
6 HR GREEN	9-74780PF	100
6 HR ORANGE	9-76300PF	100
6 HR RED* (*MOQ > 2000 pcs.)	9-74781PF	100

8" Ultra High-Intensity Flare Alternative® (20cm)

Developed as a safe, environmentally-friendly alternative to traditional incendiary flares currently used by law enforcement. With reflective strip, it enhances visibility up to 1 mile (1,6km) during emergencies. The attached wire stand allows easy set-up and activation. Ideally used at accident scenes, vehicle breakdowns, as hazard markers, and to alert drivers of obstacles.

8" Flare Alternative®	PART#	CASE
30 MIN ORANGE ULTRA-HI	9-27035	4 x 12-PK

10" Flare Alternative® (25cm)

With no batteries required, the 10" SnapLight® offers 360° of illumination. It fits securely in a metal tripod stand to prevent rolling and is visible up to 1 mile (1,6km). SnapLight® lightsticks are maintenance-free, non-toxic, non-flammable, and waterproof.

10" Flare Alternative®	PART#	CASE
2 HR GREEN	9-27049PF	4 x 10-PK
2 HR YELLOW	9-27030PF	4 x 10-PK
2 HR RED	9-27047PF	4 x 10-PK

12" SnapLight® LightSticks (30cm)

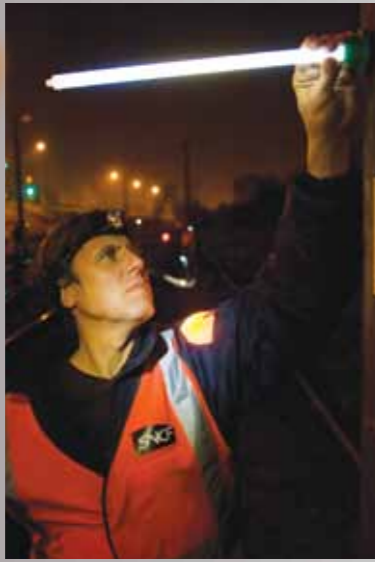
Widely used by Law Enforcement, mining and utility companies, the 12" SnapLight provides 3 times the brightness of a 6" lightstick. Individually wrapped in foil packaging.

12" SnapLight®	PART#	CASE
12 HR GREEN	9-2705101PF	25

15" IMPACT® LightSticks (40cm)

Also available in a non IMPACT® version, the 15" lightstick is the only one that activates on impact, providing instant illumination. When near gas or oil, or any combustible materials, the 15" IMPACT® stick is a dependable source of emergency lighting that is safe for use in all environments. Recommended for confined space lighting, vehicle repairs, building searches, bundle drops...

15" IMPACT® (2 End Rings)	PART#	CASE
12 HR GREEN	9-87090PF	4 x 5-PK
12 HR YELLOW	9-87110PF	4 x 5-PK
12 HR RED	9-87120PF	4 x 5-PK
8 HR BLUE	9-87100PF	4 x 5-PK
8 HR WHITE	9-87130PF	4 x 5-PK
5 MIN ORANGE-HI	9-87150PF	4 x 5-PK
15" Non-IMPACT (1 End Ring)	PART#	CASE
12 HR GREEN	9-03620PF	4 x 5-PK
12 HR YELLOW	9-06130PF	4 x 5-PK
12 HR RED	9-06120PF	4 x 5-PK
8 HR BLUE	9-06140PF	4 x 5-PK
8 HR WHITE	9-03670PF	4 x 5-PK



S.O.S.®

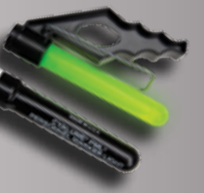
When the user spins the signaling device on its lanyard, it forms a distinctive circle pattern visible up to 3 miles (4,8km) from the air and 1 mile (1,6km) on land. Ideal for rescue operations.

S.O.S.®	PART#	CASE
8 HR GREEN	9-42740PF	50
5 MIN ORANGE ULTRA-HI* (*MOQ > 100 pcs.)	9-68260PF	50

Personnel Marker Light (PML®)

Coast Guard approved, the PML® is the superior clip-on identifying signal for rescue-at-sea or evacuation operations. Designed to be lightweight, waterproof, and buoyant, the PML® is the ideal emergency locator.

PML®	PART#	CASE
8 HR GREEN	9-80770PF	50

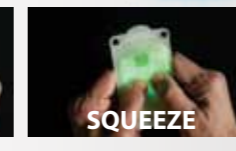


Markers

VisiPad®

Self-adhesive, rectangular and flat, the VisiPad® weighs less than a traditional 6" SnapLight®, but with the same overall surface area. The hook and hole feature allows VisiPad® to be hung.

Customize your VisiPad® with monocolour printing for MOQ>250 pcs. Additional technical fees apply.



VisiPad® (MOQ per color > 100 pcs.)	PART#	CASE
10 HR GREEN	9-27601PF	25
10 HR YELLOW	9-27631PF	25
10 HR ORANGE	9-27651PF	25
10 HR RED	9-27611PF	25
10 HR BLUE	9-27641PF	25

LightShape® Circle Markers

The self-adhesive 3" LightShape® Markers (8cm) can be used for medical triage, evacuation procedures, trail marking or as a personal protective equipment. Peel the paper backing and adhere to any surface.



LightShape®	PART#	CASE
4 HR GREEN	9-50860PF	10 x 10-PK
4 HR YELLOW	9-42710PF	10 x 10-PK
4 HR ORANGE	9-42730PF	10 x 10-PK
4 HR RED	9-42720PF	10 x 10-PK
4 HR BLUE	9-42700PF	10 x 10-PK
8 HR BLUE*	9-50875PF	10 x 10-PK
8 HR WHITE*	9-50865PF	10 x 10-PK
8 HR WHITE* GREEN CROSS	9-50866PF	10 x 10-PK
8 HR PURPLE*	9-50870PF	10 x 10-PK

*Available with MOQ of 5000 pcs.

FlexBands

The 7/8" FlexBand is the ideal emergency marker. FlexBands can be placed on wrists, stretchers, door handles... Combine FlexBands together to mark larger areas.

FLEXBANDS	PART#	CASE
6 HR GREEN	9-85990PF	12 x 3-PK
6 HR ORANGE	9-85970PF	12 x 3-PK
6 HR Lt RED	9-85960PF	12 x 3-PK
6 HR BLUE	9-85980PF	12 x 3-PK



All LightSticks Accessories

Directional Handle

Lightweight and durable, the handle is ideal for police officers and road construction crews who require a highly visible light for signaling or directing traffic.

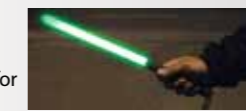
Cone Adaptor

Cone Adaptors can be used on their own or placed on top of a safety cone for improved visibility. They are stackable and easily stored.

Flash-Up stand

This stand is dedicated to path marking, hazardous area marking. It can also be used in nautical area and has got an excellent resistance to bad weather.

ACCESSORIES	PART#	CASE	ACCESSORIES	PART#	CASE
DIRECTIONAL HANDLE	9-33450	25	Kit 1 Flash-Up + 10 SnapLight®	SA8-80xxx	1+10
CONE ADAPTER	9-27103	25	Kit 10 Flash-Up + 100 SnapLight®	SA8-80xxx	10+100



Magnetic Base

Safety Grade
Allows a lightstick to be attached to any steel surface for maximum visibility and available with an anti-scratch cover for sensitive surfaces.

Military Grade
With a stronger hold and available with an anti-scratch cover.

MAGNETIC BASE	PART#	CASE
SAFETY GRADE	SA9-33460	12
Anti-Scratch Protection	SA4-60011	25
MILITARY GRADE	9-33460	25
Anti-Scratch Protection	SA4-60010	25

