



VIKING S30



Liferafts with Extended Service Intervals

VIKING S30



All the liferafts you need

VIKING S30 is the name for our range of davit-launched or throw-overboard liferafts with extended service intervals of up to 30 months - instead of the basic 12 months. For extra protection during this period, they're packed in a hermetically sealed membrane that resists the migration of water vapour.

Thanks to their unique quality and features, thousands of VIKING S30s have been installed around the world since 2000. It's a powerful testament to their design and quality - and to VIKING's commitment to offer a complete range of liferafts for all applications and requirements.

5 reasons why we're the no.1 choice for liferafts with extended service intervals

1

No power or computer needed

Annual onboard testing takes just 3 simple steps - a feature unique to the VIKING S30 liferaft. What could be more simple?



2

Everything's included

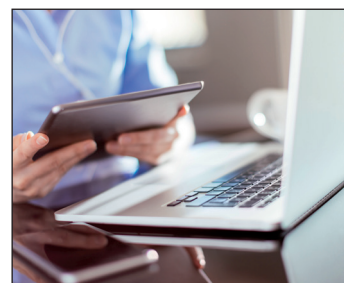
When you purchase a VIKING S30, you get a full package including a container with a testing window and testing tools.



3

Online S30 inspection course makes it even easier

The VIKING Safety Academy web-shop offers an easy and simple registration process. After one-time successful completion of the S30 Inspection course, a personal certificate is available for immediate download. The certificate is attached to a personal profile and will follow you even if you change companies or vessel.



4

Backed by the most efficient service network on earth

VIKING service stations around the globe are equipped and certified to service the VIKING S30 - and they're supported by a state-of-the-art booking system and stock locations worldwide.



5

Optional world-class service agreements

We can help you determine the right mix of standard or extended service interval liferafts to optimize servicing efficiency and reduce costs. With a Shipowner Agreement you can have both liferaft types - and vary the ratio as needed.



VIKING S30



VIKING S30 liferafts feature an extra window at the end of the container to make visual onboard inspection possible.

Packed with features

Flexible choices

VIKING S30 liferafts come in a variety of sizes, with self-righting, throw-overboard and davit-launchable versions available. They're stowed in rigid fibreglass containers, which are the same across the range, enabling the same racks, ramps and instruction materials to be used.

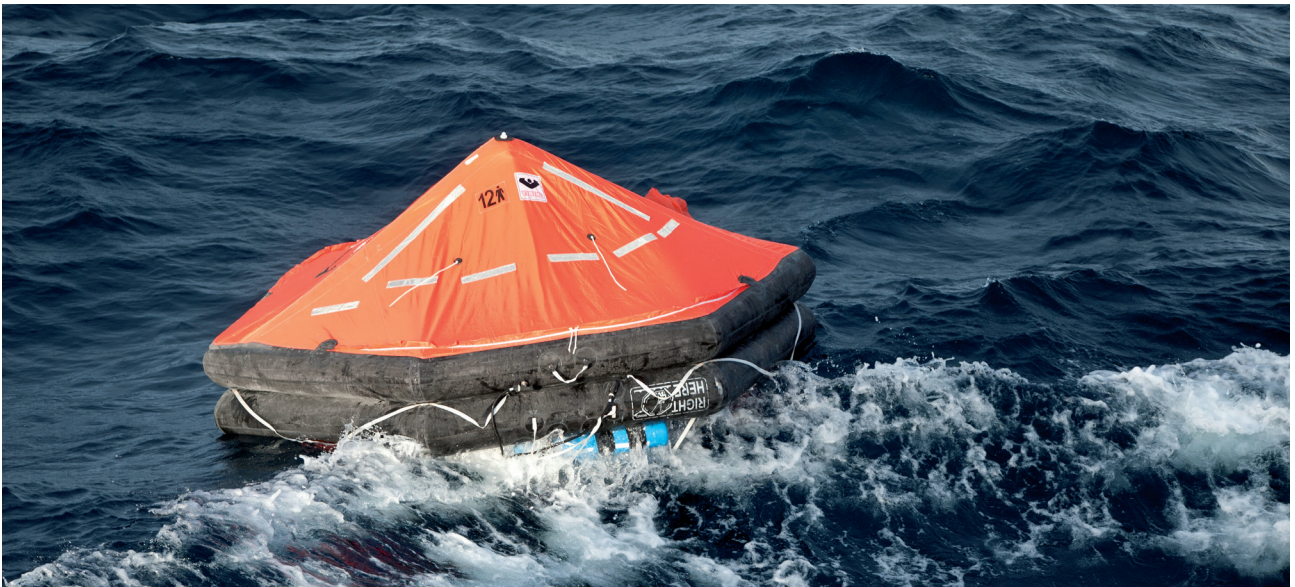
Deployment procedures are the same for standard liferafts and those with extended service intervals.

VIKING S30 liferafts are approved by DNV to SOLAS/MED requirements and relevant flag state approvals.



A special briefcase is included with every VIKING S30 liferaft, containing an instruction manual, testing tool, log book, special flashlight and a guide on how to become a VIKING S30 onboard inspector.

The case is stored on board to record completed service tasks and provide instant documentation for inspections.



Onboard service in 3 simple steps

No power or computer required! Just 3 easy steps is all it takes for the crew to perform annual onboard inspections.



1 Register date and serial number in log book



2 Insert testing tool and hold for 5 seconds



3 Record result in log book. Done!

VIKING S30s are serviced using a combination of annual onboard inspections carried out by crew and specialized service after 30 months at a VIKING certified service station.

At 30 months the liferaft must be serviced at a VIKING S30 certified servicing station.

We make it easy for you

Crew is easily certified to perform annual onboard inspections with a free e-learning course provided by VIKING Safety Academy.



**VIKING SAFETY
ACADEMY**

What exactly is an 'extended service interval' liferaft?

Extended service interval liferafts are permitted under SOLAS regulation 20.8.3, which enables liferafts to be inspected at longer intervals than 12 months, as long as the same safety levels are met as for conventional liferafts.

Less handling

The liferafts must be annually tested on board by trained and certified personnel, but require less handling than conventional products. So they carry lower associated costs (such as barge, overtime and transportation) than standard liferafts.

More planning

Service dates are based on the date of manufacture, and extension are not allowed – or grace periods for dated items. Extended service interval liferafts can only be serviced at specially equipped, certified service stations.

Similar costs

Experience shows that in the long run, higher costs of specialised services and the need to carry out replacement at certified servicing stations result in a similar overall cost level between extended service interval and standard liferafts.



Important to know about rules and regulations

The VIKING S30 liferafts are approved according to SOLAS and HSC codes. Onboard testing is covered by IMO resolution MSC.1/Circ.1328 of 11 June 2009, Guidelines for the approval of inflatable liferafts subject to extended service intervals not exceeding 30 months.

No possibility for extensions

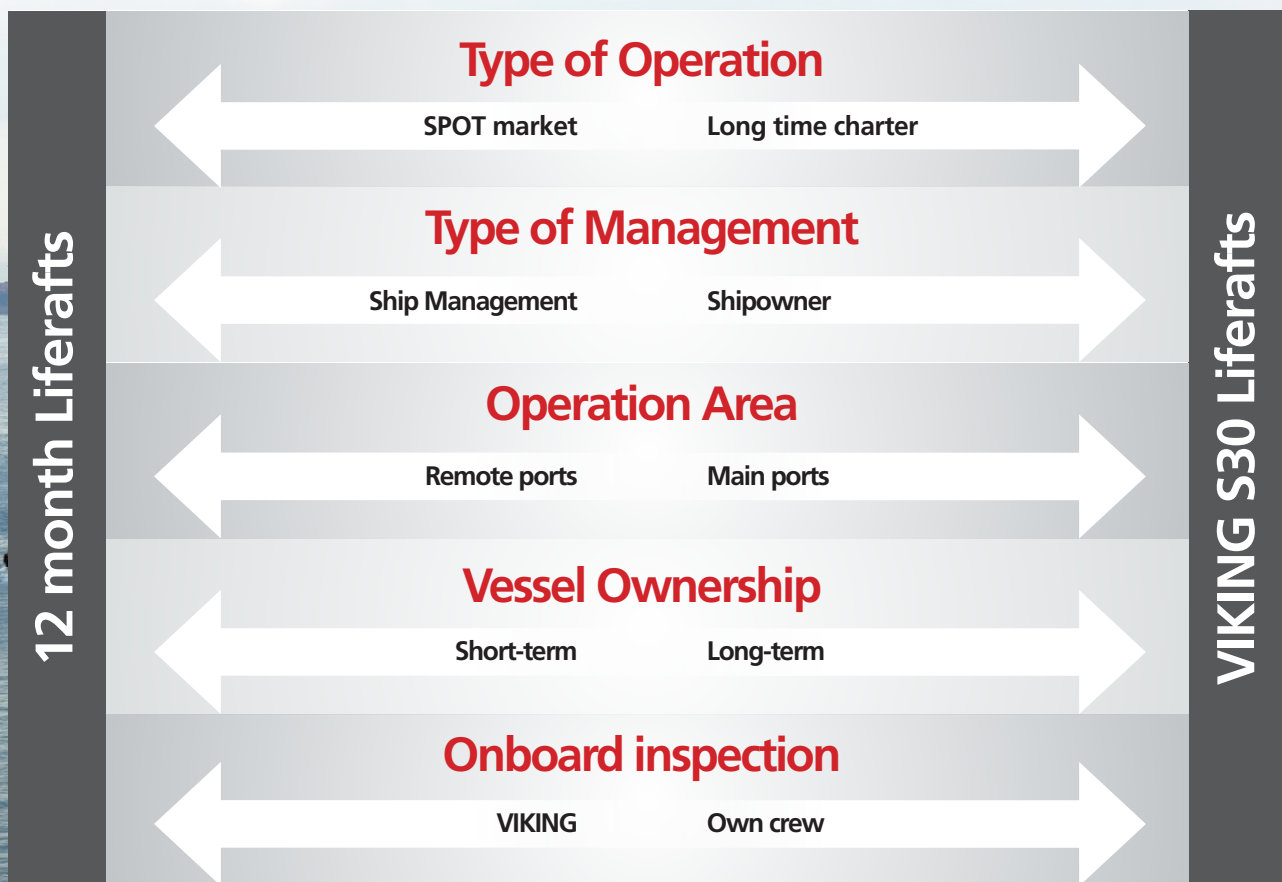
According to SOLAS III / 20.8.1.1 it is possible to get service extensions on standard liferafts (up to 5 months).

This does not apply to extended service interval liferafts, for which there is no possibility of extending the interval.

For vessels requiring ATEX approved products

VIKING liferafts with extended service intervals are packed in an alu bag with a test panel and battery inside the container. The test panel is used for the onboard inspection every 12 months. Unlike other products on the market, VIKING's testing tool is not electrical and does not need a computer or electrical outlet. A special "ATEX approved" tool is not necessary to conduct the onboard inspections on VIKING liferafts.

In fact, liferafts cannot be ATEX approved because the SOLAS required liferaft equipment includes components that are not ATEX approved, such as lights with batteries and pyrotechnics. Due to the SOLAS requirements, there is currently no brand of liferaft on the market with an ATEX approval.



Are liferafts with extended service intervals right for your fleet?

Shipowners are always keen to operate cost-efficiently. But not if it means added risk or more administrative hassles. That's why a decision to move to this type of liferaft has to be carefully considered.

A VIKING S30 liferaft is best suited to vessels that:

- Only need service in key ports
- Make predictable port calls
- Don't expect to change ownership and/or flag state
- Won't require service extensions

So they are a possibility for:

- Long-term charters and liners
- Container vessels calling main ports
- Shipowners that don't change flag states often for any of their vessels
- Ferries (with flag state approval)

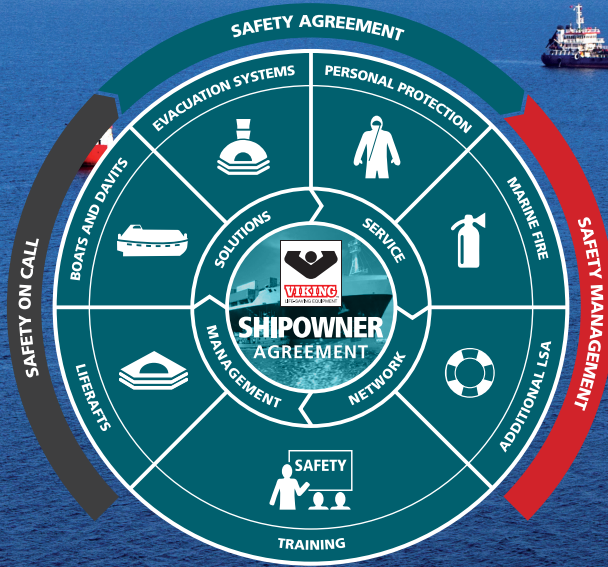
But may not be the best choice for:

- Short-term charters (spot market) or liners
- Container vessels that call in both main and remote ports
- Ship management companies



VIKING S30

- with a Shipowner Agreement



Your safety is safe with us

VIKING Shipowner Agreement

In the world of global maritime, safety is first. But to stay competitive in ever more challenging markets, we know that successful operators must continuously maximize efficiencies and reduce cost without compromising performance - even when it comes to safety.

With a Shipowner Agreement, you can trust VIKING to streamline and simplify all aspects of onboard safety and compliance. We replace complexity with flexibility and reduce administration and operational risk - freeing up resources to boost your core business.

We offer several customizable options to ensure that you always have a full range of safe and compliant life-saving equipment on this includes a flexible mix of both standard and S30 liferafts that it can be sourced and serviced in a way that suits your operations and preferences.



VIKING LIFE-SAVING EQUIPMENT

Protecting people and business

Saedding Ringvej 13, DK-6710 Esbjerg V, Denmark
Tel +45 76 11 81 00, VIKING@VIKING-life.com

WWW.VIKING-LIFE.COM