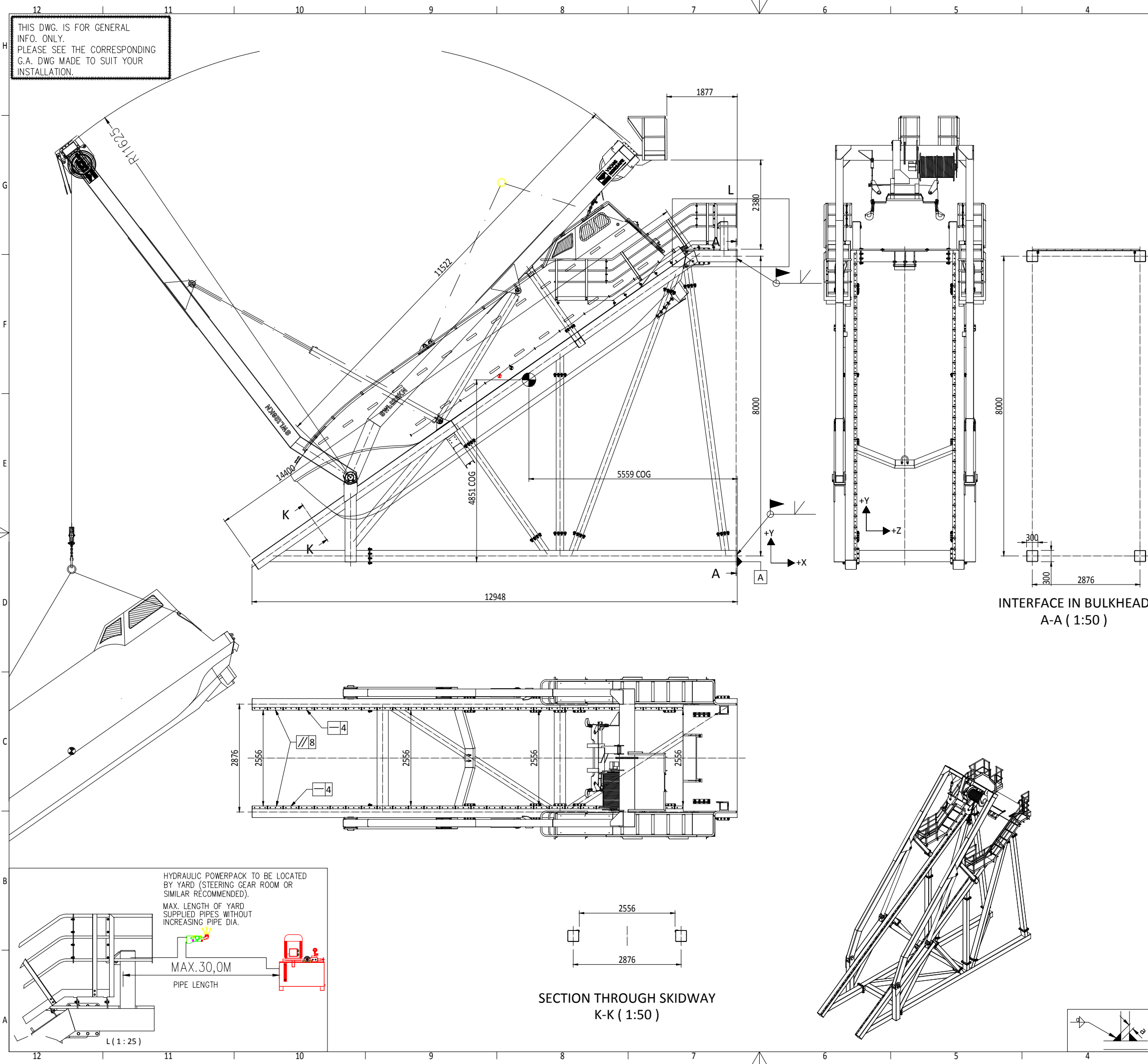


THIS DWG. IS FOR GENERAL INFO. ONLY. PLEASE SEE THE CORRESPONDING G.A. DWG MADE TO SUIT YOUR INSTALLATION.



HD-40 S Davit for GES-40 Free Fall Lifeboat:	
SWL Lowering	13047 kg
Hoisting speed	5m/min
Lowering speed	5m/min
Total davit weight	19800kg
Design specification	20° list / 10° trim
Primary means of launching	Free fall 20° list, 10° trim simultaneously
Secondary launching	Lowering by winch (5° list / 2° trim) EL. Power must be available
Max. inst. height	30 m

- NOTES:**
- Access platforms, handrails, doubler plates etc. :Yard supply.
 - Location of hydraulic power unit to be decided by yard. (Under-deck installation IP55).
 - Hydraulic piping between hydraulic power unit, davit and control valve to be yard supply.
 - All electric wiring by yard.
 - All field welds to be performed acc. to approved WPS. (Yard responsible)
All field welding is subject to class approval prior to start welding.
 - All field welds shown to be welded by yard during installation.

FORCES IN DECK (POINT LOAD EACH SIDE):
EVERYDAY CONDITION 0 DEG HEEL TRIM, EMPTY LIFEBOAT ON DAVIT

	FORCE X	FORCE Y	FORCE Z	MOM X	MOM Y	MOM Z
F1	-70 kN	60 kN	±2 kN	±2 kNm	±1 kNm	44 kNm
F2	71 kN	56 kN	±2 kN	±2 kNm	±2 kNm	20 kNm

FORCES IN DECK (POINT LOAD EACH SIDE):
VARIOUS COMBINATIONS OF 20° HEEL AND 10° LIST (SOLAS REQ.)
FULLY LOADED LIFE BOAT AT END OF SKIDWAY

	FORCE X	FORCE Y	FORCE Z	MOM X	MOM Y	MOM Z
F1	-156 kN	111 kN	±26 kN	±6 kNm	±12 kNm	71 kNm
F2	416 kN	158 kN	±51 kN	±6 kNm	±22 kNm	36 kNm

FORCES IN DECK (POINT LOAD EACH SIDE):
A-FRAME OUT - DURING HOISTING/LOWERING OF FULLY LOADED BOAT

	FORCE X	FORCE Y	FORCE Z	MOM X	MOM Y	MOM Z
F1	-211 kN	88 kN	±4 kN	±2 kNm	±1 kNm	52 kNm
F2	215 kN	56 kN	±3 kN	±2 kNm	±6 kNm	11 kNm

Reaction forces:
Reaction forces as joint loads side, marked with nodes on deck interface.
For orientation of forces see legend with marked XYZ vectors.
All forces are point loads, nominal forces without any factors.

REV	DESCRIPTION	BY	CHECK	APPRO	DATE
1	Reissued for approval	JUCH	CEZH	WAGU	20.06.2019
0	Flanged approval	SKO	SKO	GNI	22.03.2012

REVISION HISTORY

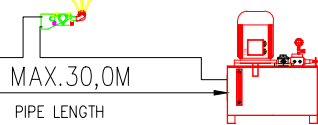
VIKING NORSAFE

VIKING Norsafe Life-Saving Equipment Norway AS
P.O. Box 115
4852 Færevik
NORWAY
Tel: +47 37 05 85 00
Fax: +47 37 05 85 01
24/7 Service: +47 37 05 63 33
Email: viking@viking-life.com

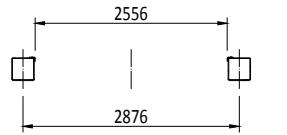
This drawing is the sole property of VIKING Norsafe Life-Saving Equipment Norway AS. It must not be submitted to other parties nor used in any manner detrimental to our interests. It shall not be copied, reproduced, used for manufacturing or sale without the written consent of VIKING Norsafe Life-Saving Equipment Norway AS. All rights are reserved.

DWG SIZE: A3	SCALE: 1:100	COPY OF:	PART NO.:	WEIGHT:	SHEET: 1 / 1
CLIENT NO.:	PROJECTION METHOD:	HD-40 S DAVIT FOR GES-40(ZHP 4.20/HYD FF)			
TOLERANCES: ISO 2768-mk, ISO 13920-BF	REVISION: 1	GENERAL ARRANGEMENT			
DWG No.: G-500007	PROJECT:				

HYDRAULIC POWERPACK TO BE LOCATED BY YARD (STEERING GEAR ROOM OR SIMILAR RECOMMENDED).
MAX. LENGTH OF YARD SUPPLIED PIPES WITHOUT INCREASING PIPE DIA.



SECTION THROUGH SKIDWAY K-K (1:50)



INTERFACE IN BULKHEAD A-A (1:50)

